



INDOFINE Chemical Company, Inc.

121 Stryker Lane, Bldg. 30

Hillsborough, NJ 08844 USA

Phone: (908) 359-6778; Fax: (908) 359-1179

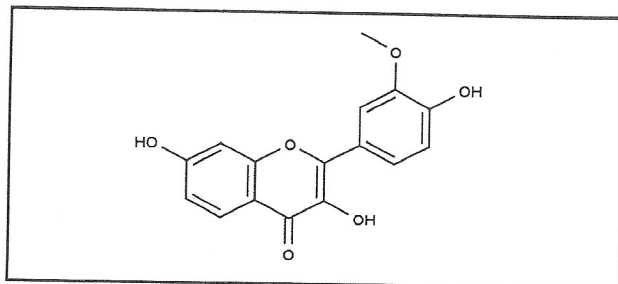
Certificate Of Analysis

021168S

GERALDOL

Lot No.: 17121505

CAS RN	21511-25-1
MOL FORMULA	C ₁₆ H ₁₂ O ₆
MOL WEIGHT	300,28



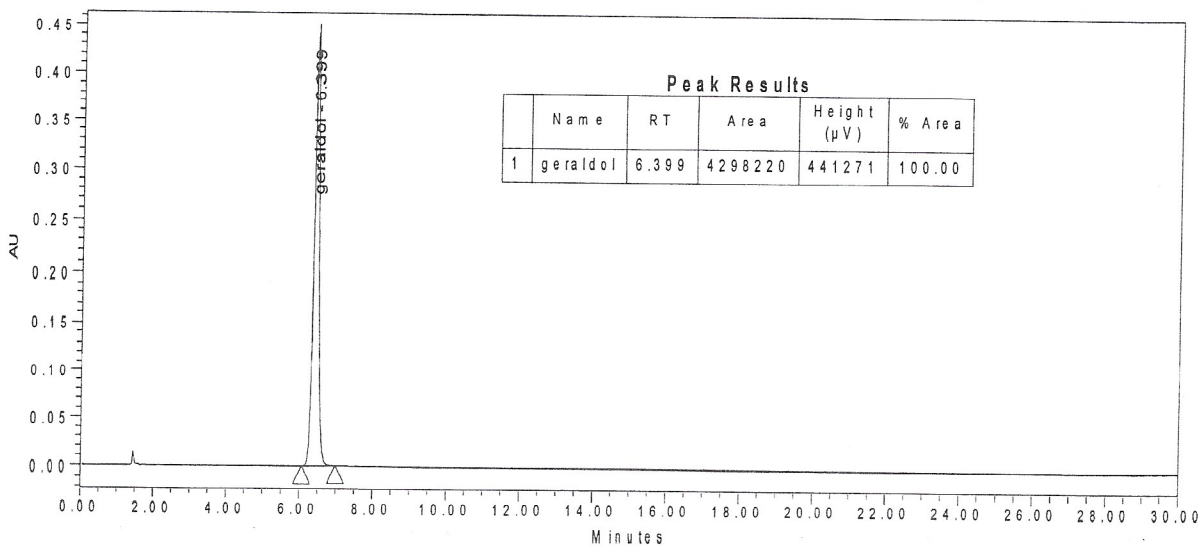
TEST	METHOD	UNIT	SPECIFICATION	RESULT
Appearance	Visual		Yellow powder	Conform
Water content	KF	% w/w		0,2
Residual solvents	GC-HS	% w/w		0,2
Inorganics	ICP-MS	% w/w		< 0,1
Purity	HPLC	% area	≥ 99,0	100,0
Assay	Calculated (*)	% w/w		99,6

(*) Assay = Purity by HPLC x (100 - %water - %solvents - %inorganics)

CHROMATOGRAPHIC PURITY / HPLC

Column : Symmetry Shield RP18 - 4,6x150 mm - 3,5 μm
Mobile phase : Water + 0,3% H₃PO₄ 45 / MeOH 35 / ACN 20 (v/v/v)
Detection : UV 254 nm

Temperature : 30°C
Flow rate : 1 ml/min
Injection volume : 5 μl
Injection solvent : EtOH + 10% DMSO



LONG TERM STORAGE : Below 8°C in a dry and dark place